



الفتان للخدمات البحرية
ALFATTAN MARINE SERVICES

ALFATTAN 9

Twin Screw Tug



REGISTRATION

Ship Name	AL FATTAN 9
Type	Twin Screw Tug
Flag	U.A.E.
Port of Registry	ABU DHABI
Class	NKK
Built	2017
Official No.	8546
Call Sign	A6E2632
IMO No	9825544

PRINCIPLE PARTICULARS

Length Overall	30.000m
Length BP	27.706m
Beam Boulded	8.600m
Depth Boulded	4.115m
Draft Design	3.500m
Hull	STEEL
Speed	10 knots
GRT	273 T
NRT	82 T

PROPULSION - MACHINERY

Main Engine: 2 x 1000HP@1406rpm

Mitsubishi S6R2-MTK3L
Gearbox: R/R 5.05:1 Reintjes WAF562L
Generator: 2 x 78kW Cummins
Propeller: 2 x Fix pitch c/w Nozzle

AUXILIARY EQUIPMENTS

F.O Pump ITUR RC-1 1/2"
Bilge & Ballast Pump: 30m³ / HR @ 25m Head
Pressure Set 2.4m³/hr @ 40PSI
Oily Water Separator: CYF-0.25Y
Air-Cond Split Unit

TANKAGE

Fuel Oil 192 Tons (approx)
Fresh Water 62 Tons (approx)
Ballast Water 67 tons (approx)

DECK MACHINERIES

Anchors 2 x 480kg
Anchors Chain 275m x 19mm
Anchor Windlass 22mm Hydraulic Driven
Towing Winch 30T Hydraulic Driven (Siong Ping, Sibu)
Towing Hook 30T c/w Quick Release

ACCOMODATION

2 x 1 VIP Room	1 man
3 x 20 men	60 men
2 x 10 men	20 men

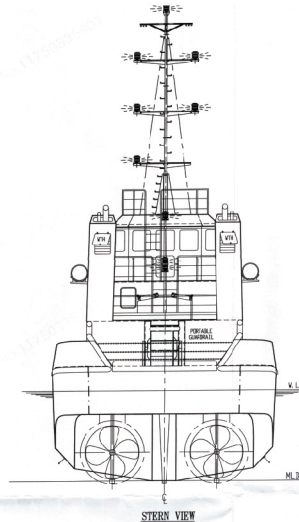
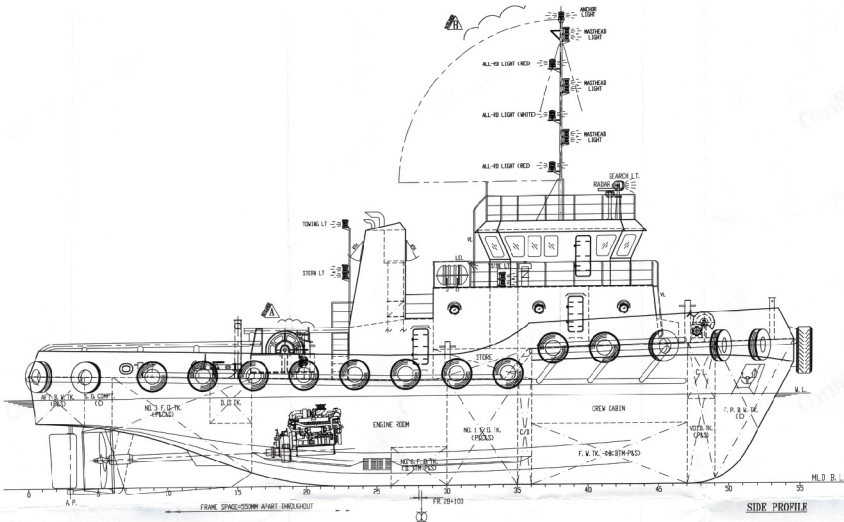
COMMUNICATION/NAVIGATION EQUIPMENT

Radar	1715 MKII (24NM)
GPS	GP-32
Echo Sounder	FURUNO FCV-620
Compass	DAIKO T-150B
VHF	ICOM IC-M304
SSB Radio	IC-M710
EPIRB	SEP-406

LIFE SAVING & FIRE FIGHTING

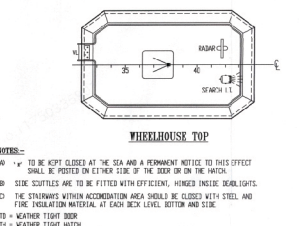
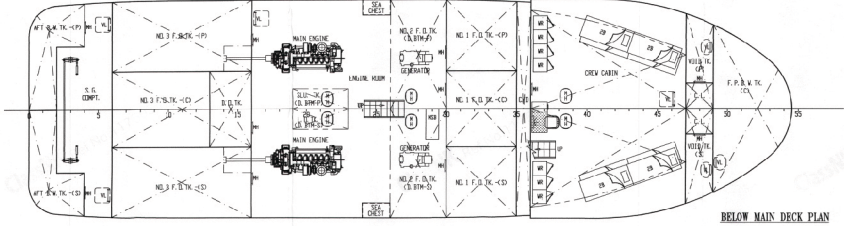
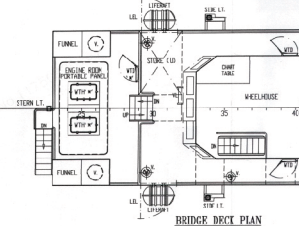
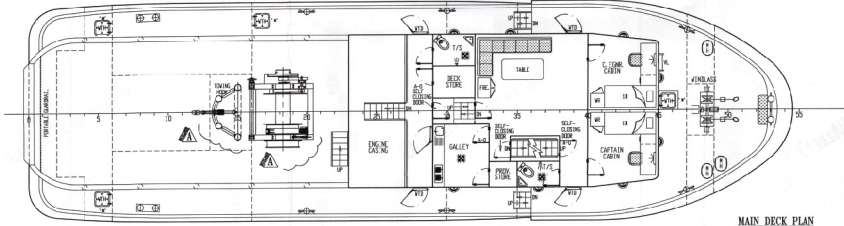
Navigation & Search Light
2 x 15 men Inflatable Life Raft
Fire Fighting as per SOLAS

GA PLAN



PRINCIPAL PARTICULARS :-

L. O. A.	30.00M (98.42FT)
L. W. L.	29.20M (95.81FT)
L. B. P.	27.70M (90.89FT)
BREADTH MLD	8.60M (28.21FT)
DEPTH MLD	4.115M (13.50FT)
DESIGNED DRAFT	3.500M (11.48FT)
SPEED (SUBJECT TO FREEBOARD AT ABT 11 KNOTS)	
COMPLEMENT	10 MEN
F. O. CAPACITY	192 TONS (APPROX.)
F. W. CAPACITY	66 TONS (APPROX.)
E. W. CAPACITY	49 TONS (APPROX.)
MAIN ENGINE	MITSUBISHI 5662-TMPTK8 1030PS1406RPM x 2 UNITS
GEAR BOX	PAITO S. US 1
GENERATOR	50KW x 2 UNITS
NAVIGATION AID	INTERNATIONAL
PORT OF REGISTRY	ABU DHABI
FLAG	UAE



NOTES:-

- (A) * TO BE KEPT CLOSED AT THE SEA AND A PERMANENT NOTICE TO THIS EFFECT SHALL BE POSTED ON EITHER SIDE OF THE DOOR OR ON THE HATCH.
- (B) SIDE SCUFFLES ARE TO BE FITTED WITH EFFICIENT, HINGED INSIDE, BEAM LIGHTS.
- (C) THE STAIRWAYS WITHIN ACCOMMODATION AREA SHALL BE CLOSED WITH STEEL AND FIRE INSULATION MATERIAL AT EACH DECK LEVEL BOTTOM AND SIDE.
- WTD = WEATHER TIGHT DOOR
- WTI = WEATHER TIGHT FITTING

FOR APPROVAL
24 MARCH 2017

DATE	APPROVED AS PER BUILDER'S REQUEST
DATE	APPROVED AS PER BUILDER'S REQUEST
DATE	MODIFICATION
SHIP	
30M TUG BOAT	
TITLE	
GENERAL ARRANGEMENT	
OWNER	SIANG SENG SHIPBUILDING SDN BHD
BUILDER	SIANG SENG SHIPBUILDING SDN BHD
CLASS	CLASS NO. 0549
BLUE OCEAN SHIP DESIGN SDN. (NAVAL ARCHITECT)	
17L, 2ND FLOOR, JALAN PERANG, 86000 STEEL, SURABAYA, MALAYSIA	
TEL : +608-24888888	
FAX : +608-24888888	
E-MAIL : ADMIN@BLUEOCEANSDN.COM	