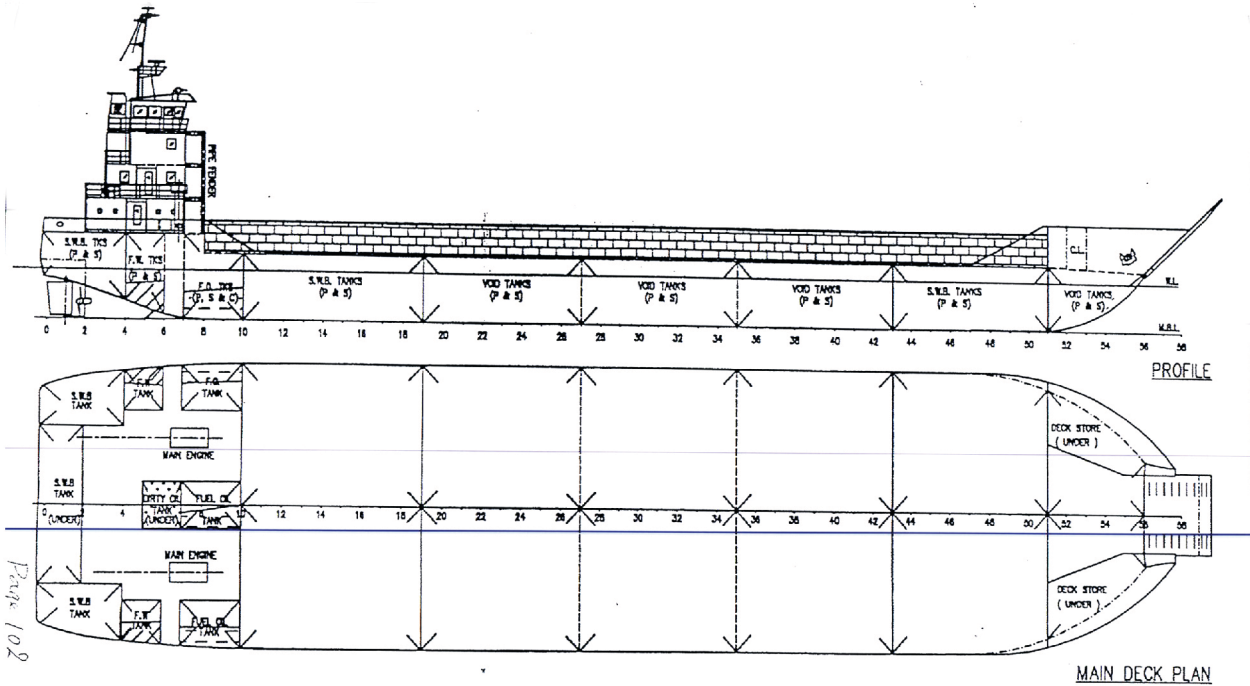


MARWA 1

Floating Dock



الفتان للخدمات البحرية
ALFATTAN MARINE SERVICES



PROJECT TITLE	85M LANDING CRAFT		KHIAM CHUAN MARINE PTE LTD MARINE CONSULTANTS, DESIGNERS AND SURVEYORS		
CONDITION NO.5	DECK CARGO DEPARTURE WGH 10% CONSUMABLES (S.G. = 1.25)				
LOADING CODE	FRESH WATER	DIRTY OIL		JOB NO. :	LOADING PLAN
	FUEL OIL	CARGO		AUTHOR :	
	BALLAST WATER			DATE :	

REGISTRATION

Ship Name: MARWA-I
Type: FLOATING DOCK
Flag: U.A.E.
Port of Registry: ABU DHABI
Class: N/A
Built: 1978
Official No.: N/A
Call Sign: N/A
IMO No: N/A
Deadweight: 6400 T

Hull

Discharge Rate: Steel
Crane X 2: 850 MT/Hour
10 TON

TANKAGE

Fuel Oil: 176.6 ton
Fresh Water: 134.20 ton
Sewage Water: N/A

PROPULSION - MACHINERY

Main Engines: catterpillar
Generator 50 kv: 2 unit
Compressor HP 375: 1 piece
Hydraulic Power Pack: 2400 HP
Control Panel Ballast system: 2 unit

DECK MACHINERIES

Anchors: 3
Anchors Chain: 10 knots
Anchor Windlass: Wire
Towing Hook: N/A

ACCOMODATION

3 rooms: 4 persons capacity
3 rooms: 1 person capacity

COMMUNICATION/NAVIGATION EQUIPMENT

VHF: 2 units
GPS (Garmin): 1 unit
NAVIGATION LIGHT: DC Navigation Lights
Radar (Rino): 1 unit

PRINCIPLE PARTICULARS

Length Overall: 88 m
Length B.P: 82 m
Breadth Moulded: 21.6 m
Depth Moulded: 4.8 m
Draft Design: 3.6 m
GRT: 2380 T
NRT: 1939 T
Docking Capacity: 2500 T